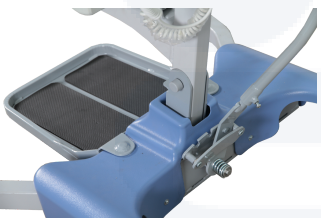
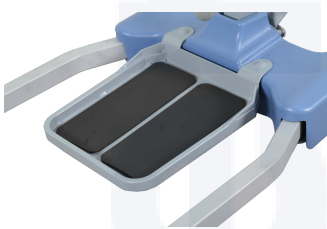


Easy Rise Assist Sit-to-Stand Lift

**550 LBS
Weight
Capacity**

The Easy Rise Assist Sit-to-Stand Lift is designed to enhance the mobility and independence of individuals with limited strength or mobility. With a robust weight capacity of 550 lbs, this lift ensures secure and effortless sit-to-stand transfers, offering unparalleled support and dignity to users.



Features

- Facilitates safe and smooth sit-to-stand transfers for patients
- Sturdy and stable base for enhanced patient security
- Quick and hassle-free attachment of slings
- Standalone battery option available for added convenience.
- 550 lbs Weight Capacity
- Intuitive controls for easy and precise lifting and lowering
- 360-degree swivel for seamless patient positioning
- Smooth and quiet operation



Spec Table

General Specifications

Title	Value
Model #	72000
Max. Hanger Bar Height	68"
Min. Hanger Bar Height	33.8"
Base Width (Open)	40"
Base Width (Closed)	26.8"
Base Height (Clearance)	4.1"
Base Length	43"
Caster Size (Front/Rear)	3" / 4"
Weight Capacity	550 LBS

Electrical Specifications

Title	Value
Battery	24V DC
Charger Input	100-240V AC
Accessories (Optional)	Standalone Battery Charger
Battery Status	LCD Display